

**Welcome to
La Banque Postale**



Congratulations, you have just opened your 1st bank account, which will enable you to:



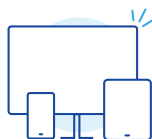
Have a credit
card



Deposit or
take out cash
safely



Have an IBAN
number



Manage
your bank
account

**Within a few days, you will receive
1 text message and 3 letters at your
registered home address:**

■ **D+1**

Temporary password for online banking by text message.

■ **D+4**

Welcome letter with online banking login details and an official document containing bank account details.

■ **D+5**

Credit card.



■ **D+7**

Password for your credit card.

**! Keep those letters safe, as well as
your bank account information.**

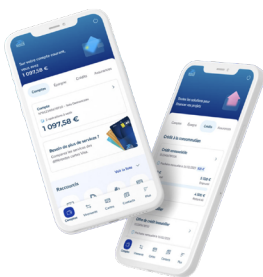
*D=Day you open your account.

First time on your banking app?

- Download the La Banque Postale mobile app.  
- Enter your **login details** (provided by your bank advisor) with the **temporary password** received by text message.
- Change your password and memorize it. You will need it every time you access your bank application.

Once logged in to your online customer bank application, you will be able to:

- Check your account balance, savings and documents.
- Make transfers.
- Contact your advisor.



To access your personal bank account:

[Log in](#)

Need to withdraw cash, pay money in or check your balance? Your local Post Office team can help with that. Pop in any time we're open.

A few tips to manage your bank account easily:

- Try to keep a small amount in your account (€20 for example). Check your balance account regularly to avoid difficulties.
- Your bank account may only receive your own funds (not those of relatives).
- If requested, you might have to prove the provenance of your funds.
- Try to pay your Treasury fines promptly, to avoid further debits on your account.

Check your bank account regularly, it might be closed if the tips above are not followed.

Any questions?



Go to the
post office



Call

3639 Free service
+ call charges

Meet your local Post Office team:



La Banque Postale – SA à Directoire et Conseil de Surveillance.
Capital social 6 585 350 218 €. 115 rue de Sèvres 75275 Paris CEDEX 06.
RCS Paris 421 100 645. ORIAS n° 07 023 424.
632281 - Dépliant bienvenue – 02/2026 © Getty Images - **MEDIAKEYS**